

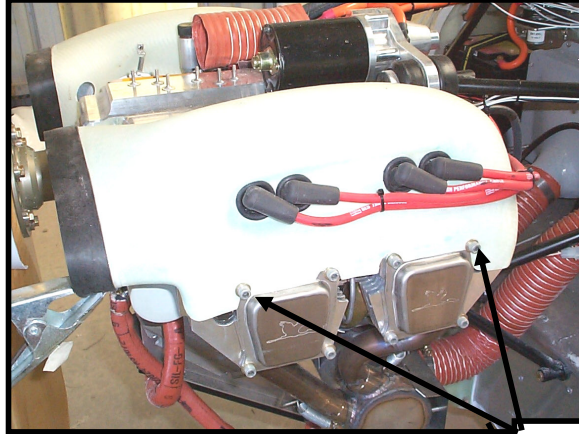
## RAM AIR COOLING DUCTS PROCEDURE 4 & 6 Cylinder

### Air Ducts

As the Jabiru Ram air cooling ducts that are used on the Jabiru engines are fitted to a large number of different aircraft, the nose of the duct is left longer for different applications. It may be necessary to cut the front of the Duct down to fit your cowl. When satisfied with the length, cut 1mm insertion rubber to length, sand rubber & cooling duct to ensure a good bond. Bond with 5-min Araldite making sure you have about 1/2" overlap.



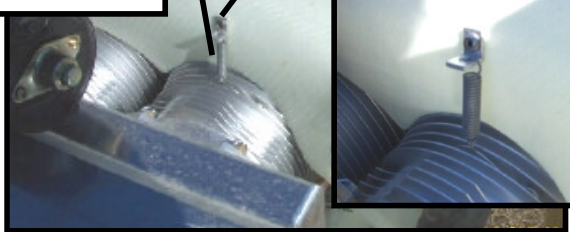
Clamp rubber while rubber is being glued.



Ram Air cooling duct installed.

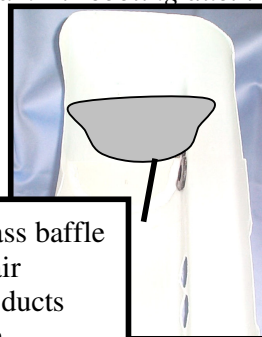
Attachment points Left & right Side

Tension spring attached with lock-wire.



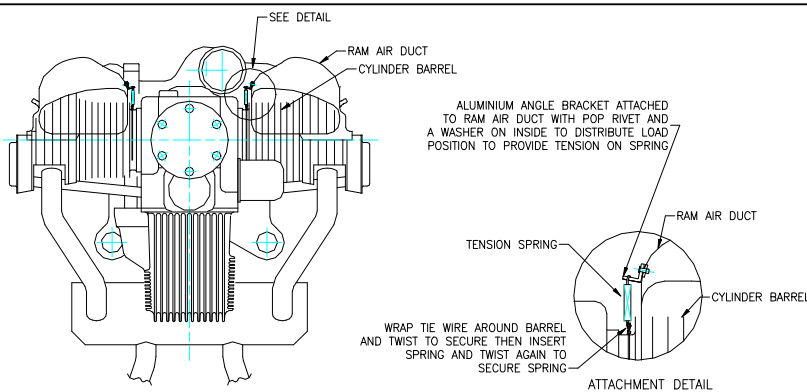
Aluminum angle riveted On duct

Fiberglass baffle in ram air cooling ducts between sparkplugs



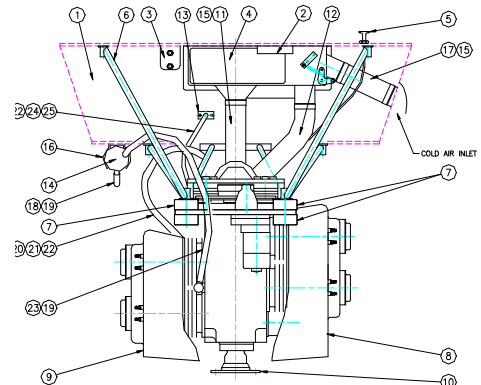
### Fitting Ram air cooling duct with Tension spring

Wire is wound around the cylinder to hold the spring for attachment to the aluminium angle which is riveted to the Ram air Cooling Duct. Only attach too the front two cylinders i.e. #1 & 2 Cyl.



Drawing 9111094/1 AIR DUCT ATTACHMENT

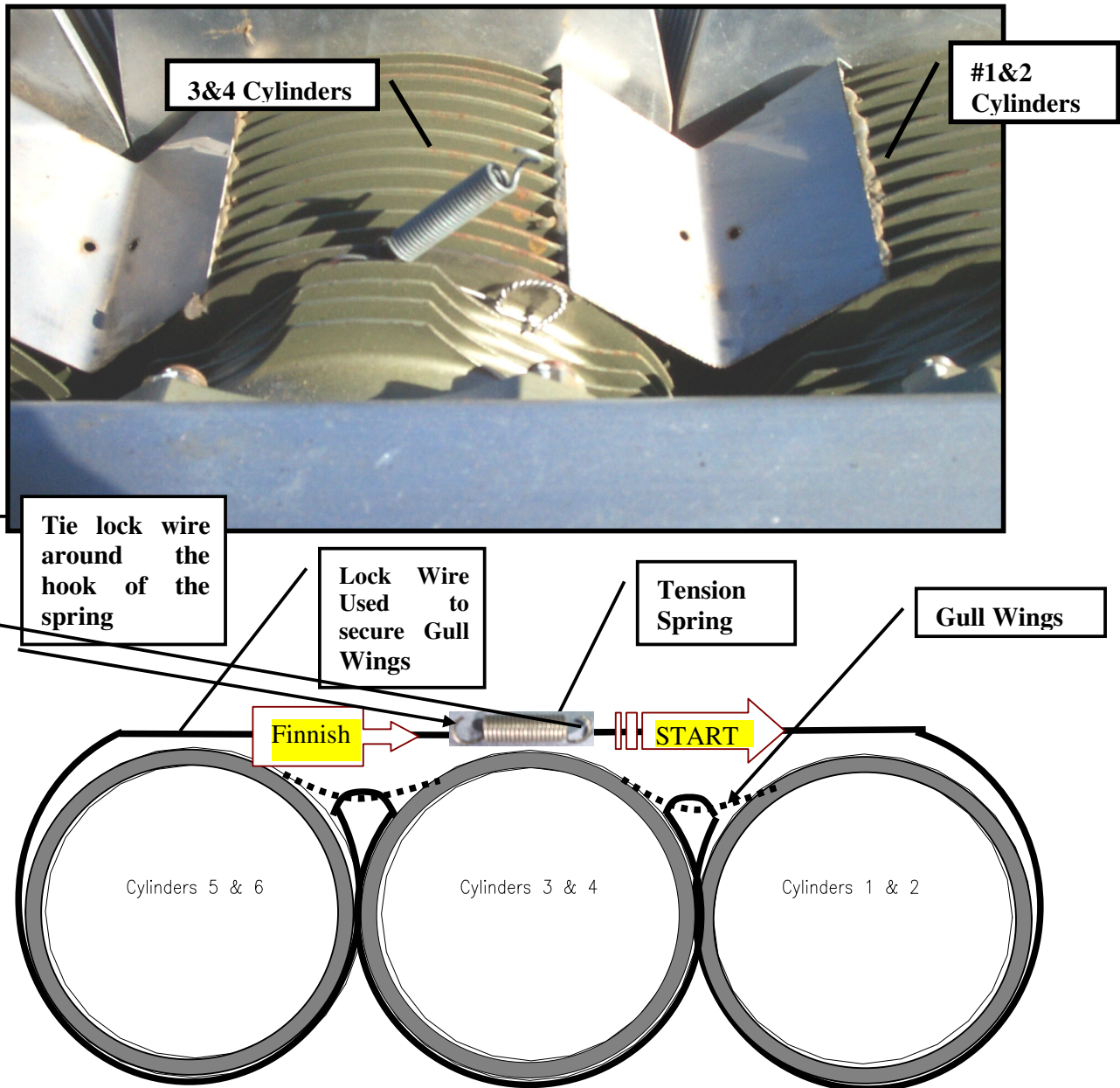
**Ausuband's Own - Light Sport Aircraft**



### Gull Wing Baffle for 6 Cylinder engines only

*These are fitted between the cylinders in order to enable air to go through the head fins. The Ram air cooling ducts fit over the Gull Wings after the gull wings are fitted.*

*See Photo below to indicate where lock wire wraps around cylinders on L&R hand side.*



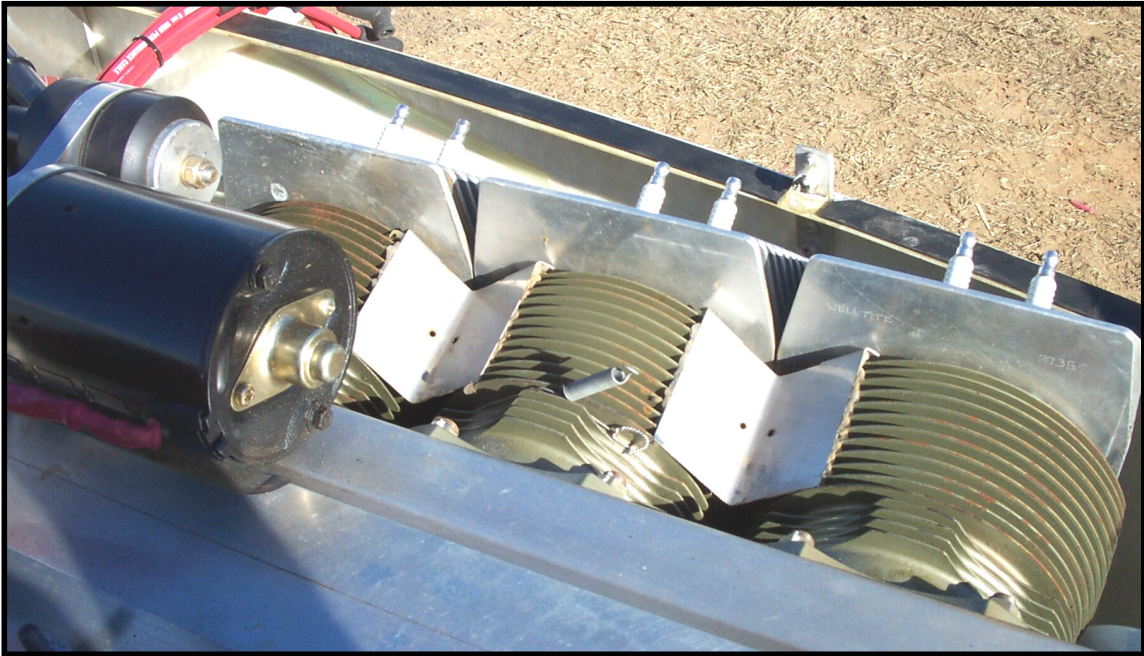
#### **Fitting procedure:**

*To fit Gull wings,*

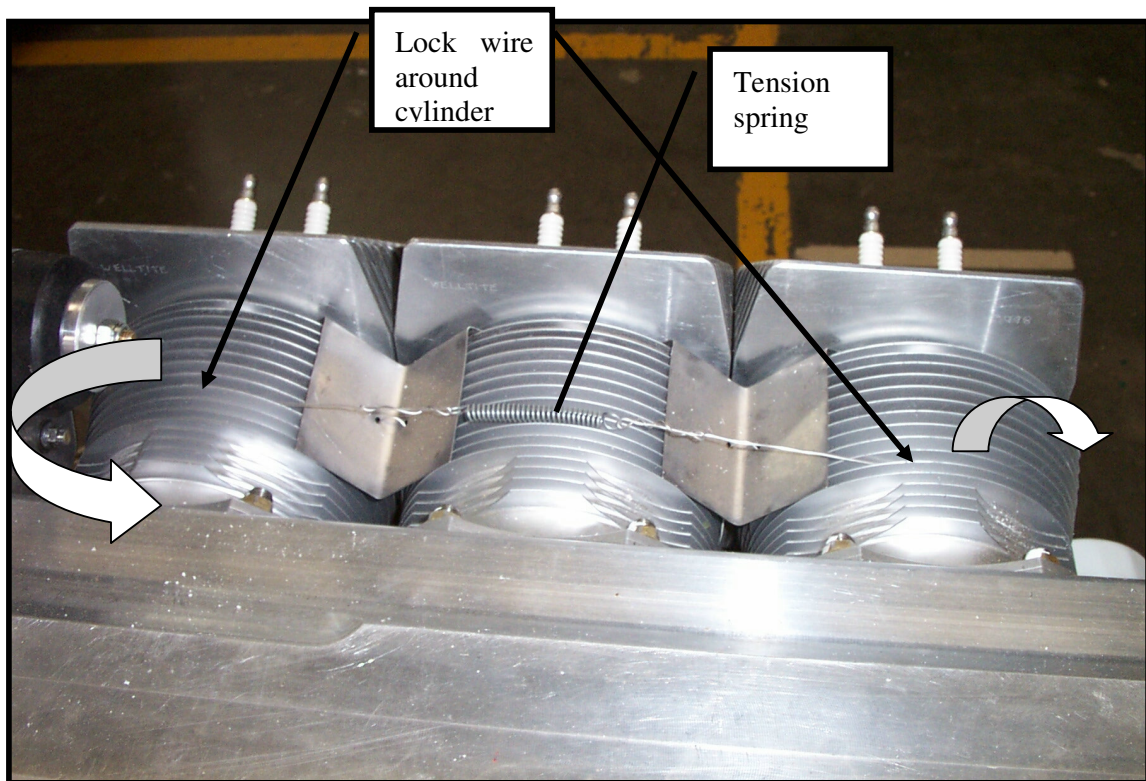
- 1. Wrap wire around the front cylinder making sure you are against the cylinder & not around any pushrod tubes.*
- 2. Feed the wire up through the Gull wing, pulling the wire until it is tight.*
- 3. Push lock wire back down through the second hole & wrap around the next cylinder.*
- 4. Repeat step 2 & 3.*



5. *To finish the lock wire off, make a loop through the spring & tension it enough to pull the Gull wings into the cylinder Valleys.*



Gull Wings pre-fitted between cylinders



Gull Wing Fitted with Lock wire & spring